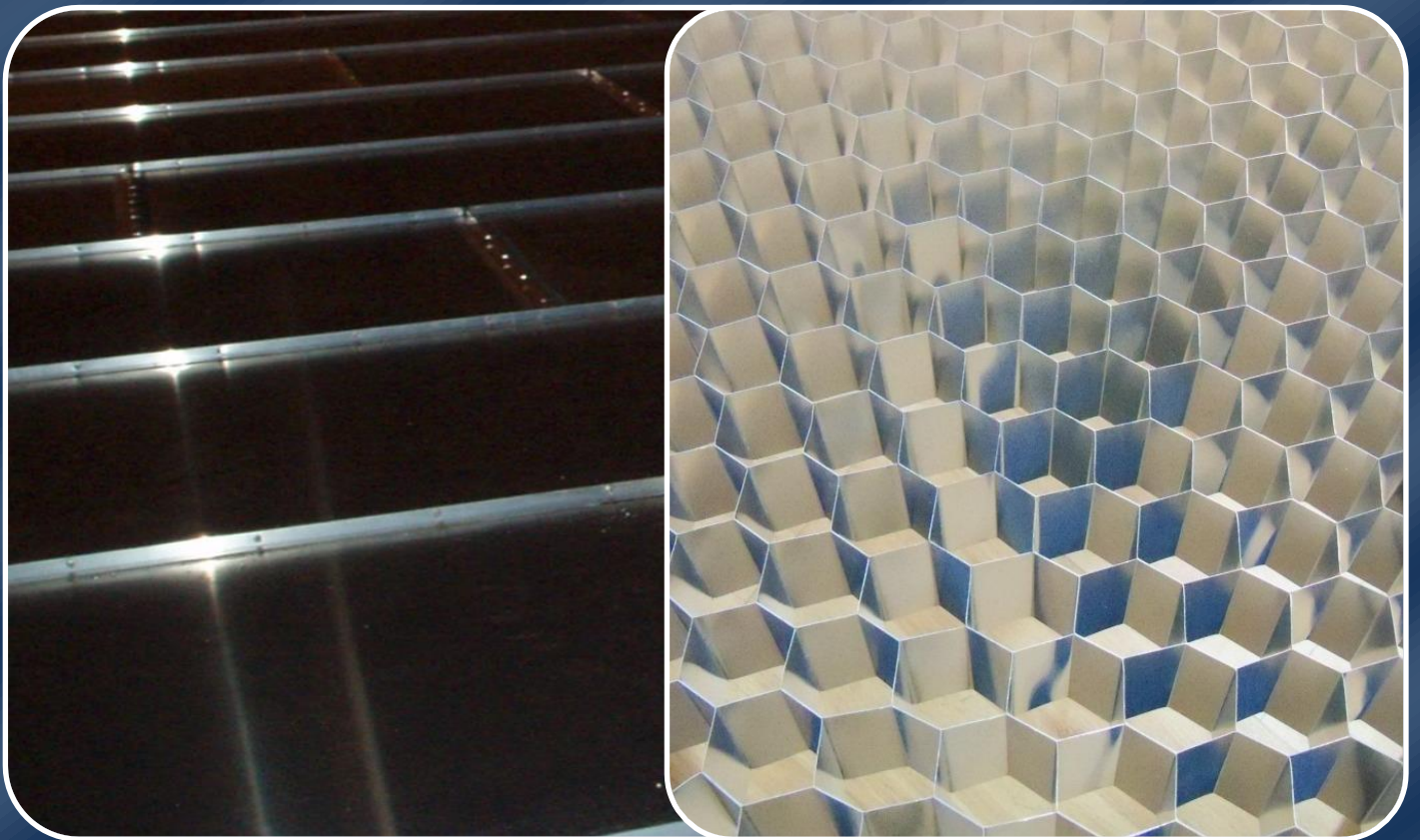


ALUMAX HEXCORE[®]

FULL CONTACT ALUMINIUM HONEYCOMB INTERNAL FLOATING ROOF



ULTIMATE DESIGN – SUPERIOR STRUCTURE

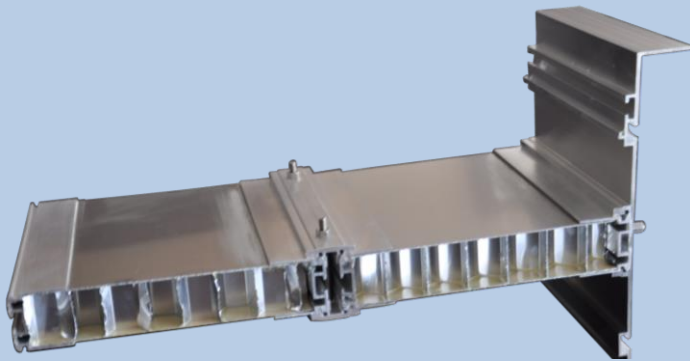


ATECO TANK TECHNOLOGIES ENGINEERING CO.LTD.
www.atecotank.com

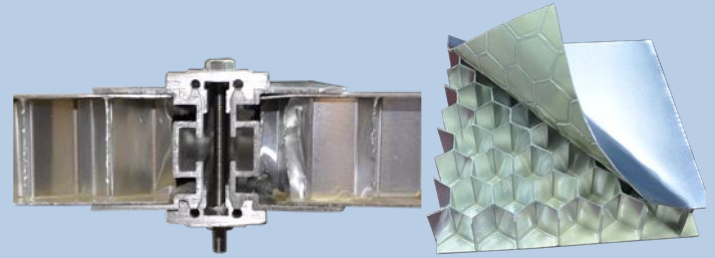
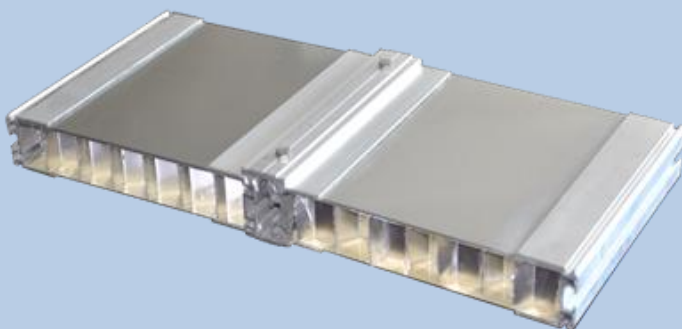
ATECO ALUMAX HEXCORE FULL CONTACT ALUMINIUM HONEYCOMB INTERNAL FLOATING ROOF

Type	FULL CONTACT INT. FLOATING ROOF
Description	Honeycomb Panel
Used On	Internal Floating Roof
Rim Space	Nominal Rim Space of 200±125 mm or 300±225 mm
Service	Suitable For All Products
API Compliant	API650.APPH
CODRES Compliant	Yes
API2003 Compliant	Yes
Aromatic Service	100%
Typical Service Life	25-30 Years
EPA Compliant	Yes

DESIGN



- ATECO's **ALUMAX-ROBUST**™ Full Contact Floating Roof™ is the most efficient aluminum floating roof available.
- Eliminate vapor space below floating roof.
- Fully welded, pressure tested panels ensure extended maintenance free life and maximize structural strength.
- Average diameter **ALUMAX-ROBUST**™ IFR provides 350% excess buoyancy.
- Metallic skins are 2.5 times the API minimum thickness.
- Eliminate product compatibility issues with the installation of an ATECO shoe seal (standard equipment) on the **ALUMAX-ROBUST**™ internal floating roof.
- Decrease vapor loss even further by using our cable suspension system.
- Patented Double Clamped joint provides maximum strength and vapor retention. Independent laboratory testing has proven it to be 16 times more efficient than the U.S. EPA default factor.



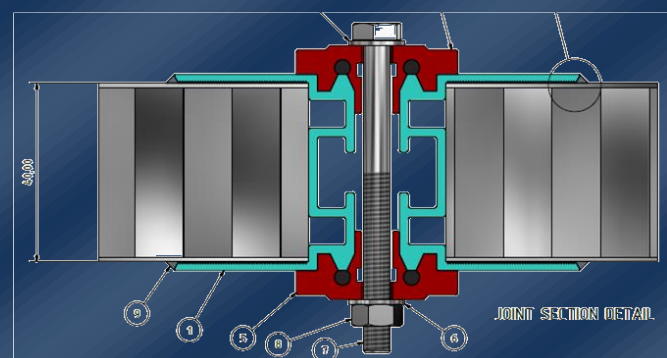
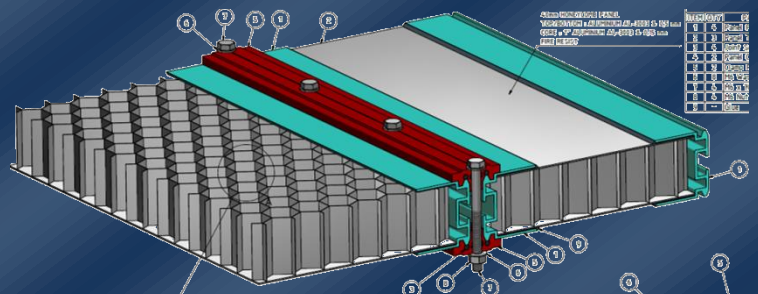
Double-Clamp locking joint with cap channel for strength and vapor integrity

Our patented, welded module Aluminum ALUMAX-ROBUST Full Contact IFR is designed for owners who prefer the benefits of the full contact aluminum floating roof concept.

ATECO's welded module design eliminates costly failures and product compatibility concerns associated with an exposed adhesive design. Factory-installed test ports allow future field-testing of each module so that the tank can be certified gas free without concern that dangerous vapors or product may be trapped inside the module.

ATECO Aluminum ALUMAX-ROBUST Full Contact IFRs have been designed around strength and safety, Eliminating concerns of leaking modules and product entrapment associated with other designs.

- No exposed failure prone adhesives
- Module skins are more than 2-1/2 times the API required minimum thickness to reduce corrosion effects and increase strength
- Each module is tested and certified leak free prior to shipment
- ATECO's standard Aluminum ALUMAX-ROBUST Full Contact IFRs have enough strength and buoyancy to be fitted with single or double shoe seals
- Our standard ALUMAX-ROBUST IFR can support 750 pounds on the outer edge while floating with buoyancy to spare

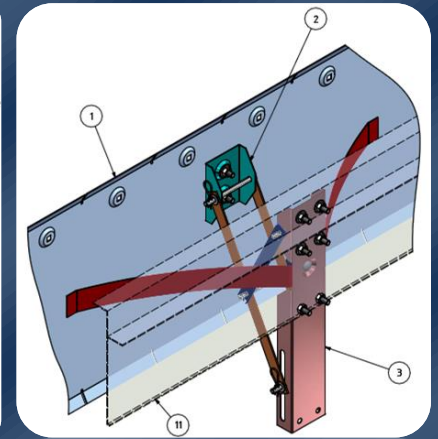
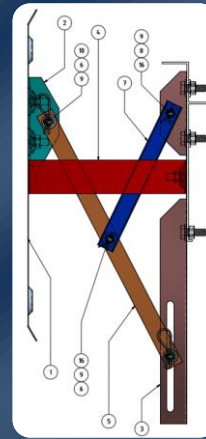
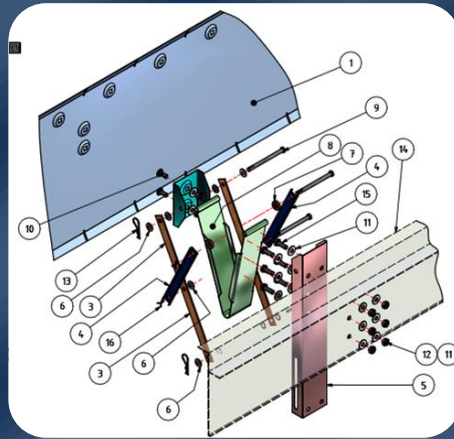
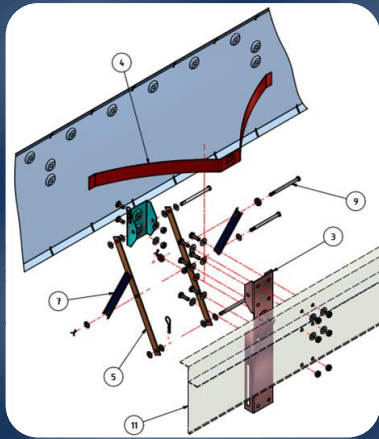


ATECO ALUMAX HEXCORE FULL CONTACT ALUMINIUM HONEYCOMB INTERNAL FLOATING ROOF

**ATECO ALUMAX-HEXCORE ALUMINUM FULL CONTACT INTERNAL FLOATING ROOFS
DESIGNED FOR STRENGTH, SAFETY AND LONG TERM VALUE**

Features	Benefit
All edge closures and penetrations are seal welded to all panels	Eliminates adhesive bonded joints and potential leaks. Maximizes strength with minimum deflection. Positive electrical bonding.
Shop pressure test of all modules	Proof of sealed modules to your jobsite. Maximum quality control.
1" Hexagonal cell NON-PERFORATED CORE	Enables field testing of all modules before maintenance and hot work. Enables seal welding and pressure testing of all modules.
All modules have test plugs	Field test eliminates guesswork. Hot work permits can be written with confidence, knowing that each tested module is vapour free.
No field fabrication	Maintains the highest level of quality. No field cutting or gluing is required.
Top and bottom skins are 1 mm thickness	Selected for puncture and corrosion resistance, corrosion allowance, durability, strength, increased factors of safety and weldability.
1500 x 3000 module size, maximum	Faster field installation. Minimizes emissions.
Bolts are all stainless steel with stainless steel or aluminium nuts.	Selected for strength, reliability and corrosion resistance. Joint fasteners are out of the liquid.
Module-to-module joints are Double Side Clamped design	Designed with small gaps between modules. Maximizes strength, stiffness and durability. Minimizes evaporation losses through joints.

ATECO ALUMAX-ROBUST SEAL DETAILS



**ATECO TANK TECHNOLOGIES
ENGINEERING CO.LTD.**

Yazlık Yeni Mah. Başöğretmen Cad. No:46
Gölcük 41200 KOCAELI-TURKEY
Tel : +90.262.3351598 – 3351599 Fax : 90.262.3351567

www.atecotank.com info@atecotank.com